

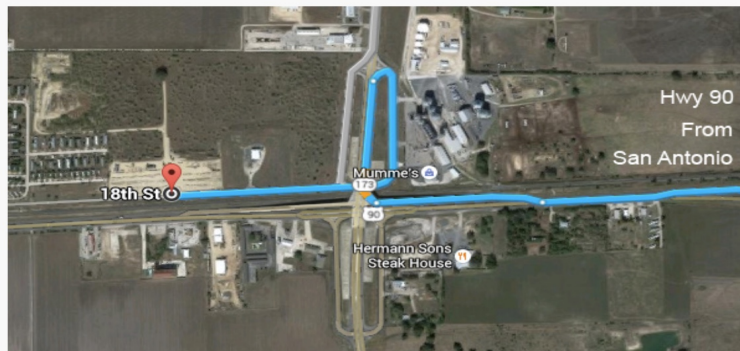
STONE YARD DOVE HUNT

GENERAL INFORMATION

PROPERTY/HUNTING AREA

- STONE YARD DOVE HUNT IS LOCATED ADJACENT TO THE CITY OF HONDO
- WE ARE A “FLYWAY ZONE”
- THE STONE YARD IS IN THE FIRST “FLYWAY ZONE” FOR DOVES FLYING OUT FROM THEIR ROOSTING SPOTS IN THE CITY OF HONDO TO FEED AT THE SUNFLOWER FIELDS TO THE EAST
- THE HUNTING AREA INCLUDES GRAVEL COVERED, ALL WEATHER ROADS, ALL WEATHER PARKING AND ALL WEATHER HUNTING AREAS.
- THE FIELD IS SHREDDED, WITH SOME RESIDUE, BUT IS CLEAN, WITHOUT WEEDS OR STUBBLE, TO ALLOW EASY RETRIEVAL OF BIRDS
- MESQUITE TREES TO PROVIDE COOL SHADE AND CAMOUFLAGE FOR THE HUNTERS
- BENCHES AND PICNIC TABLES ARE LOCATED UNDER THE TREES TO PROVIDE SEATING FOR HUNTERS, AND TO STORE GEAR/BIRDS OFF THE GROUND. THESE ALSO SERVE AS THE “DESIGNATED HUNTING SPOT”
- THIS LAND HAS BEEN HUNTED FOR OVER 20 YEARS. DOVES HAVE ALWAYS BEEN PLENTIFUL AND FLY THROUGHOUT THE YEAR EACH AND EVERY YEAR. THEY FLY LOW, HIGH, DURING THE RAIN, IN THE WIND, WHEN COLD OR HOT
- MOST HUNTERS ARE ABLE TO LIMIT THROUGHOUT THE SEASON, RETURN NUMEROUS TIMES DURING THE SEASON AND YEAR AFTER YEAR
- WITH MIGRATORY BIRDS AND HUNTING IN GENERAL, THERE IS NO GUARANTEE GIVEN OR IMPLIED AS TO YOUR ABILITY TO GET YOUR LIMIT, THE NUMBER OF DOVES, OR IF DOVES WILL BE FLYING THE DAY OF YOUR HUNT

LOCATION



484 18th Street East

Hondo, TX 78861

Located at the Northwest corner of Hwy 90 and Hwy 173 in Hondo, Texas.

Enter through Dryden Stone Company 484 18th Street East.

2023 HUNTING RATES

- THE NUMBER OF HUNTERS IN THE FIELD WILL BE LIMITED FOR EACH HUNT
- THE FIRST TWO DAYS OF THE REGULAR SEASON ALWAYS HAVE THE MOST HUNTERS
- EXPERIENCED HUNTERS ONLY FIRST 5 DAYS OF THE REGULAR SEASON

SEPTEMBER 1- OCTOBER 29	DECEMBER 15- JANUARY 15, 2024
AM <u>OR</u> PM	ALL DAY
\$150	\$100

DEPOSITS

- INDIVIDUALS UP TO 9 IN-GROUP - \$50 PER HUNTER FOR EACH HUNT
- 10 OR MORE – 50% OF THE TOTAL FOR EACH HUNT
- **DEPOSITS ARE NON REFUNDABLE AND NOT TRANSFERABLE**

PAYMENTS

- CASH OR CHECK ONLY- NO CREDIT CARDS OR ELECTRONIC PAYMENTS

REFUNDS

- DEPOSITS ARE NOT REFUNDABLE
- HUNTER CANCELLED HUNTS ARE NOT REFUNDABLE
- UNSUCCESSFUL HUNTS- (ARRIVING LATE, RAN OUT OF AMMO, DIFFICULTY HITTING BIRDS, OR ANY OTHERS REASON)- NOT REFUNDABLE.
- RAIN, HEAT, WIND, HIGH BIRDS, OR ANY OTHER REASONS ARE NOT REFUNDABLE

GROUP HUNTS

- PRIVATE AREAS & PAVILIONS AVAILABLE TO RESERVE FOR SMALL OR LARGE GROUPS
- EXCLUSIVE HUNTS- RESERVED THE ENTIRE PROPERTY
- LARGE ALL WEATHER PARKING AVAILABLE IN THE FIELD AND AT PAVILION
- COVERED PORCH WITH RESTROOM INDOORS
- SEATING AND SERVING TABLES INCLUDED

ALL HUNTERS

- EACH PERSON, HUNTING OR NOT, WHO ENTERS THE PROPERTY MUST SIGN A WAIVER EACH HUNT, MORNING & AFTERNOON EACH DAY
- WE CANNOT ACCOMMODATE INEXPERIENCED HUNTERS THE FIRST 5 DAYS OF THE REGULAR SEASON

ADULTS

- NON HUNTERS-NO CHARGE

YOUTH

- FIRST TIME HUNTER- NO CHARGE
- NOVICE HUNTER- 1/2 PRICE
- ABLE TO LIMIT- FULL PRICE
- SEPARATE AREAS ARE AVAILABLE FOR HUNTERS & FAMILIES WITH YOUNG CHILDREN

REDUCED RATES

- REDUCED RATES ARE OFFERED AT OUR DISCRETION
- PLEASE ASK IF YOU HAVE SPECIAL CIRCUMSTANCES
- WHEN BIRDS THIN OUT, BECOME MORE UNPREDICTABLE, THE NUMBERS CHANGE DRAMATICALLY FROM ONE DAY TO THE NEXT & IT BECOMES DIFFICULT FOR GOOD HUNTERS TO LIMIT, RATES MAY BE REDUCED AT OUR DISCRETION

HUNTING TIME PERIODS

- FLYING TIMES VARY ACCORDING TO THE HEAT, WIND, RAIN AND THE VERY NATURE OF MIGRATORY BIRDS

ALL TIMES ARE APPROXIMATE & BASED ON PREVIOUS YEARS	
<u>MORING HUNTS</u> SIGN IN- 7:00 A.M. OUTBOUND FLIGHT 7:30 RETURN FLIGHT 9:00-11:00	<u>AFTERNOON HUNTS</u> SIGN IN- 2 P.M. OUTBOUND FLIGHT 2:30 RETURN FLIGHT 4:00-7:00

DAILY BIRD LIMIT

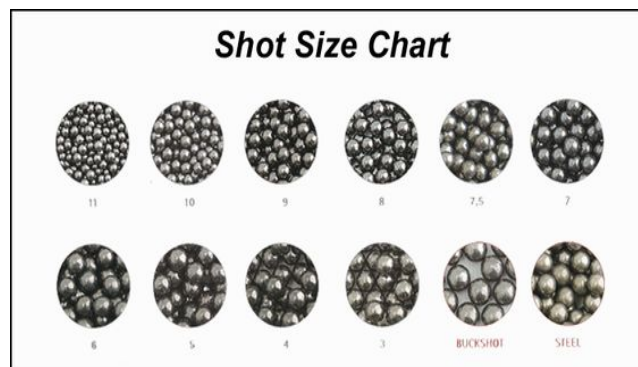
- 15 BIRDS PER DAY
- ONLY ONE PERIOD WILL BE ALLOWED FOR GETTING A LIMIT
- WHEN BIRDS ARE NOT AS PLENTIFUL, MORNING HUNTERS CAN FINISH THEIR LIMIT THE SAME AFTERNOON, AT OUR DISCRETION
- FINISHING A LIMIT DOES NOT EXTEND TO THE NEXT DAY

FLIGHT PATH & ALTITUDE

- EACH DAY IS DIFFERENT BUT VERY SIMILAR TO PREVIOUS DAYS
- DOVES FLY ALL ACROSS THE PROPERTY IN ALL DIRECTIONS THROUGHOUT THE SEASON
- GENERALLY, THEY FLY SIMILAR PATHS FROM ONE DAY TO THE OTHER, BUT WILL VARY WITH THE WEATHER, THE FEED THEY ARE GOING TO, AND HOW FAST THEY LEARN TO AVOID GETTING SHOT
- DOVES FLY AT THE TOPS OF THE MESQUITE TREES (15-20') AND BETWEEN THE TREES BEFORE THE SEASON OPENS, BETWEEN THE SEASONS AND OFTEN DURING THE SEASON
- MOST WILL FLY AT "TALL" TREE TOP LEVELS (40-60') EASY ATTAINABLE HEIGHTS
- TO KNOCK DOWN THE HIGHEST BIRDS, YOU HAVE TO BE A GOOD SHOT OR LUCKY
- HUNTERS CONSISTENTLY GETTING THE HIGHEST BIRDS, SHOOT WITH A 12 GAUGE, HIGH BRASS, 6'S, OR BIGGER, USING A FULL OR MODIFIED CHOKE
- YOU WON'T GET CLOSE TO THE HIGHEST BIRDS USING REGULAR BIRD SHOT, SKEET SHOT, OR SMALLER GUNS UNLESS YOU ARE VERY GOOD, OR VERY LUCKY!
- THE HIGHEST BIRDS WILL CERTAINLY CHALLENGE YOUR ABILITIES AND SHOOTING SKILLS. SELDOM, THEY ARE ALL TOTALLY OUT OF RANGE

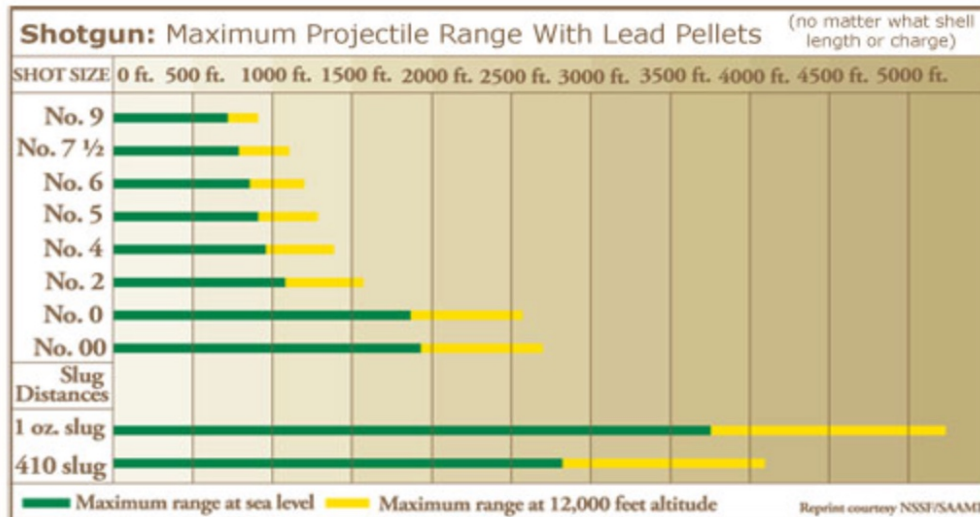
SHOTGUNS & AMMUNITION

- WE DO NOT RENT GUNS
- HUNTERS MUST PROVIDE YOUR OWN GUNS AND AMMUNITION



Maximum Projectile Range—Shotgun

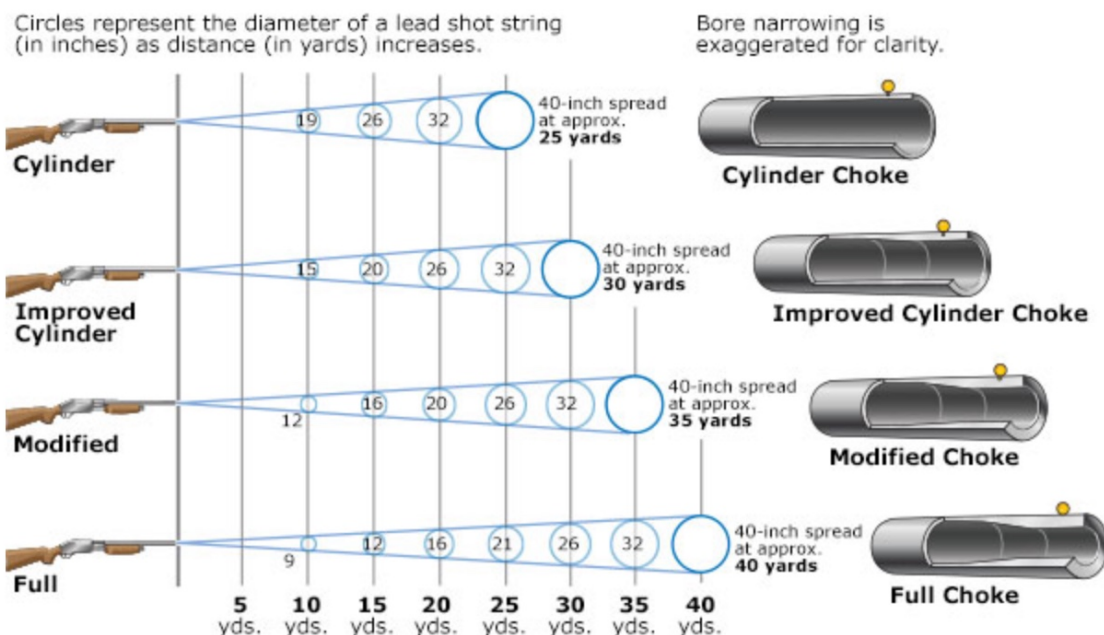
The following chart shows the maximum projectile range when you use lead pellets in your shotgun. Notice how altitude affects this range.



Shot String at Various Distances

Click on the image below to see a detailed diagram (PDF format) showing the effects of choke on shot string at various distances.

Effect of Choke on Shot String at Various Distances



VEHICLES

- VEHICLES ARE NOT ALLOWED IN THE HUNTING AREA
- CONCESSIONS CAN BE MADE FOR HUNTERS WITH SPECIAL CIRCUMSTANCES
- VEHICLES CAN DRIVE IN & UNLOAD GEAR THEN RETURN TO PARKING AREA
- UTV'S ARE NOT NECESSARY, BUT ARE PERMITTED IN THE HUNTING AREA
- ALL AREAS CAN BE WALKED TO EASILY
- YOU CAN BE TAKEN TO YOUR HUNTING SPOTS BY OUR UTV

BIRD CLEANING

- CLEANING BIRDS IS NOT ALLOWED IN HUNTING AREA
- TABLES WITH WATER ARE AVAILABLE OUTSIDE OF THE FIELD

SHELLS & TRASH

- PLEASE REMOVE ANY TRASH AND SHELLS FROM YOUR HUNTING AREA
- SHELL & TRASH BUCKETS ARE PROVIDED IN THE FIELD
- MAGNETS TO PICK UP SHELLS ARE PROVIDED IN THE FIELD
- DUMPSTER & LARGE TRASH CANS ARE LOCATED NEAR THE CLEANING STATIONS

BIRD DOGS

- TRAINED BIRDS DOGS ARE WELCOME BUT MUST NOT INTERFERE WITH OTHER HUNTERS
- UNTRAINED DOGS CAN BE TRAINED IN AREAS AWAY FROM OTHER HUNTERS OR DURING WEEKDAYS AND DAYS WITH FEWER HUNTERS
- PLEASE CALL IF YOU HAVE QUESTIONS (210) 415-4731

RESTROOMS

- WOMEN'S RESTROOMS ARE AVAILABLE IN THE OFFICE
- PORTABLE FACILITIES ARE AVAILABLE IN THE HUNTING AREA FOR ALL HUNTERS

ACCOMODATIONS

- WE DO NOT HAVE OVERNIGHT ACCOMMODATIONS ON THE PROPERTY

LOCAL ACCOMODATIONS

- HONDO INN
 - 830-426-4468
- HONDO EXECUTIVE INN-HONDO
 - 830-426-2536

- **REGENCY INN-HONDO**
 - **830-426-3031**
- **HILLSIDE BOUTIQUE HOTEL-CASTROVILLE**
 - **830-538-3200**
- **KOCH HOTEL BED & BREAKFAST-D'HANIS**
 - **830-363-7500**
- **RANCHITO IN HISTORIC QUIHI-HONDO**
- **KWI ADVENTURES@GMAIL.COM**
 - **830-426-8820**
- **COUNTRYSIDE RV PARK-HONDO**
 - **830-426-5666**
- **QUIET RV PARK-HONDO**
 - **830-931-5777**
- **FLYING L RANCH RESORT-BANDERA**
 - **830-292-5134**
- **ANTLER OAKS LODGE & RV-BANDERA**
 - **830-796-8111**
- **RIVER OAK INN -BANDERA**
 - **830-796-7751**

HUNTING LICENSE

- **YOU MUST HAVE THE STATE REQUIRED LICENSES, STAMPS, AND TRAINING.**
- **REFER TO THE TEXAS PARKS AND WILDLIFE DEPARTMENT FOR GUIDELINES REGARDING LICENSING & WILL DOVE HUNTING.**

○ **TEXAS PARKS AND WILDLIFE**
(800) 792-GAME
[HTTPS://TPWD.TEXAS.GOV/](https://tpwd.texas.gov/)

LICENSE REQUIREMENTS

- **ALL MIGRATORY GAME BIRD HUNTERS MUST HAVE A VALID HUNTING LICENSE. NON-RESIDENTS UNDER 17 YEARS OF AGE ARE DESIGNATED AS RESIDENTS AND MAY HUNT WITH A RESIDENT LICENSE. HUNTERS 17 YEARS OF AGE OR OLDER MUST HAVE A DRIVER'S LICENSE OR PERSONAL IDENTIFICATION CERTIFICATE (ISSUED BY THE DEPARTMENT OF PUBLIC**

SAFETY) ON THEIR PERSON WHILE HUNTING. NON-RESIDENTS MUST HAVE SIMILAR DOCUMENTS ISSUED BY THE AGENCY IN THE STATE OR COUNTRY OF WHICH THE PERSON IS A RESIDENT THAT IS AUTHORIZED TO ISSUE DRIVER'S LICENSES OR PERSONAL IDENTIFICATION CERTIFICATES.

ENDORSEMENT REQUIREMENTS

- **A PERSON 17 YEARS OF AGE OR OLDER MUST POSSESS A MIGRATORY GAME BIRD ENDORSEMENT RECEIPT TO HUNT ANY MIGRATORY GAME BIRD IN THIS STATE. FEDERAL LAW ALSO REQUIRES WATERFOWL HUNTERS 16 YEARS OF AGE AND OVER TO HAVE A FEDERAL MIGRATORY BIRD HUNTING AND CONSERVATION STAMP (COMMONLY CALLED A DUCK STAMP; AVAILABLE AT MOST POST OFFICES AND TPWD OFFICES).**
- + **A MIGRATORY GAME BIRD ENDORSEMENTS REQUIRED TO HUNT ANY MIGRATORY GAME BIRD, INCLUDING MOURNING DOVES.**

BANDED BIRDS

- **PLEASE CHECK DOVES YOU SHOOT FOR LEG BANDS AND REPORT THEM. THE BANDS ARE VERY SMALL AND EASY TO OVERLOOK. PREVIOUS STUDIES INDICATED TWO-THIRDS OF BANDED DOVES TAKEN BY HUNTERS WERE NEVER REPORTED. HIGH REPORTING RATES MAXIMIZE RETURN ON HUNTING LICENSE DOLLARS SPENT FOR NEEDED MANAGEMENT INFORMATION.**
- **PLEASE REPORT BANDS TO WWW.REPORTBAND.GOV**

HIP-HARVEST INFORMATION PROGRAM

- **NO PERSON SHALL HUNT MIGRATORY GAME BIRDS IN THIS STATE UNLESS THAT PERSON IS CERTIFIED IN THE HARVEST INFORMATION PROGRAM (HIP) IN TEXAS. WHEN YOU PURCHASE A HUNTING LICENSE, INDICATE TO THE LICENSE CLERK THAT YOU INTEND TO HUNT MIGRATORY GAME BIRDS AND NEED TO BE HIP CERTIFIED BY ANSWERING A FEW SIMPLE QUESTIONS.**
- **THE LETTERS "HIP" SHOULD APPEAR ON YOUR LICENSE TO INDICATE THAT YOU HAVE BEEN HIP CERTIFIED.**
- **THE HARVEST INFORMATION PROGRAM (HIP) IS A FEDERALLY MANDATED PROGRAM TO IMPROVE INFORMATION ABOUT THE HARVEST OF ALL MIGRATORY GAME BIRDS. ANYONE WHO PURCHASES A HUNTING LICENSE OR ANY MIGRATORY BIRD HUNTING ENDORSEMENTS WILL BE ASKED A FEW SIMPLE QUESTIONS ABOUT THEIR MIGRATORY BIRD HUNTING ACTIVITIES. FOR ADDITIONAL INFORMATION ABOUT HIP, YOU MAY CONSULT THE TPWD OUTDOOR ANNUAL, THE [WEB PAGE FOR H I P](#) OR**

CALL (512) 389-4505.

- LICENSES, PERMITS AND ENDORSEMENT RECEIPTS (OR REPLACEMENTS IF THEY ARE LOST OR STOLEN) ARE AVAILABLE AT TPWD OFFICES, MANY SPORTING GOODS STORES, BAIT SHOPS AND OTHER RETAILERS, OR BY CALLING 1-800-TX-LIC-4-U.

KNOW YOUR BIRDS

LEGAL GAME BIRDS AVES DE CAZA LEGAL



Mourning Dove
Paloma huilota

- Brown with black spots on wing
Marrón con manchas negras en el ala
- Long, pointed tail
Cola larga y puntiaguda
- All of Texas *En todo el estado*



White-winged Dove
Paloma ala blanca

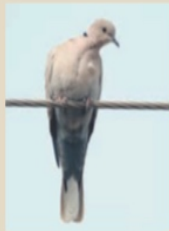
- White bar on wing *Franja blanca en el ala*
- Long, rounded tail *Cola larga y redondeada*
- South Texas, increasing statewide
Sur de Texas, propagándose en todo el estado



White-tipped Dove
(White-fronted)
*Paloma arroyera
(frente blanco)*

- Large, rounded tail
Cola grande y redondeada
- Rust-colored wing linings
Revestimiento color canela del ala
- South Texas *Sur del estado*

UNPROTECTED SPECIES ESPECIES NO PROTEGIDAS



Eurasian
Collared Dove
*Paloma exótica
de collar*

- Narrow black collar on nape of neck
*Collar negro y angosto en la base
del cuello*
- White, squared tail underside
Inferior de la cola es blanco y cuadrado
- Pale gray body, black bill, red irises
Cuerpo gris pálido, pico negro, ojos rojos



Rock Dove
(Rock Pigeon)
*Paloma doméstica
(Paloma bravía)*

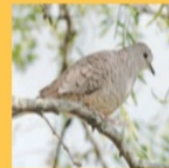
- Large plump body, small head
Cuerpo grande y gordo, cabeza pequeña
- Gray, brown or white
Gris, marrón o blanco
- Common in cities and ranches
Común en ciudades y ranchos

PROTECTED, NOT HUNTED PROTEGIDAS, NO CAZADAS



Band-tailed Pigeon
Paloma torcaza

- Yellow bill *Pico amarillo*
- White band on neck *Franja blanca en el cuello*
- Wooded mountain areas *Bosques de montaña*



Inca Dove
*Tortolita mexicana
(tortola cola larga,
conguita, coquita)*

- Scaly looking *Aspecto escamoso*
- Small, brown body
Cuerpo pequeño y marrón
- Urban and suburban areas, woodland edges,
savannahs, thickets
*Áreas urbanas y suburbanas, bordes del
bosque, sabanas, matorrales*



Common
Ground Dove
*Tortolita azul
(cocochoa,
columbita común)*

- Sandy brown color *Color café arenoso*
- Dark spots on wings
Manchas oscuras en las alas
- Short, round tail *Cola corta y redonda*
- Small body, short thin bill
Cuerpo pequeño, pico corto y delgado

DOVE HUNTING ZONES

NORTH ZONE

- THAT PORTION OF THE STATE NORTH OF A LINE BEGINNING AT THE INTERNATIONAL BRIDGE SOUTH OF FORT HANCOCK; THENCE NORTH ALONG FM 1088 TO STATE HIGHWAY 20; THENCE WEST ALONG STATE HIGHWAY 20 TO STATE HIGHWAY 148; THENCE NORTH ALONG STATE HIGHWAY 148 TO INTERSTATE HIGHWAY 10 AT FORT HANCOCK; THENCE EAST ALONG INTERSTATE HIGHWAY 10 TO INTERSTATE HIGHWAY 20; THENCE NORTHEAST ALONG INTERSTATE HIGHWAY 20 TO INTERSTATE HIGHWAY 30 AT FORT WORTH; THENCE NORTHEAST ALONG INTERSTATE HIGHWAY 30 TO THE TEXAS-ARKANSAS STATE LINE.

CENTRAL ZONE

- THAT PORTION OF THE STATE BETWEEN THE NORTH ZONE AND THE SOUTH ZONE.

SOUTH ZONE

- THAT PORTION OF THE STATE SOUTH OF A LINE BEGINNING AT THE INTERNATIONAL TOLL BRIDGE IN DEL RIO; THENCE NORTHEAST ALONG U.S. HIGHWAY 277 SPUR TO U.S. HIGHWAY 90 IN DEL RIO; THENCE EAST ALONG U.S. HIGHWAY 90 TO STATE LOOP 1604; THENCE FOLLOWING LOOP 1604 SOUTH AND EAST, THEN NORTH, TO INTERSTATE HIGHWAY 10; THENCE EAST ALONG INTERSTATE HIGHWAY 10 TO THE TEXAS-LOUISIANA LINE.

